

Reproduction Game

Matching

Female Reproductive Tract:

- | | |
|--------------------|--|
| 1. Ovaries | --outside entrance into reproductive tract |
| 2. Fallopian Tubes | --open cavity that supports fetus and has secretions |
| 3. Uterus | --found between cervix and vulva |
| 4. Cervix | --organs that release eggs |
| 5. Vagina | --physical barrier between vagina and uterus |
| 6. Vulva | --pathway leading to a uterine horn |

Describe:

Estrous Cycle:

Ovum:

Ovulation:

Male Reproduction:

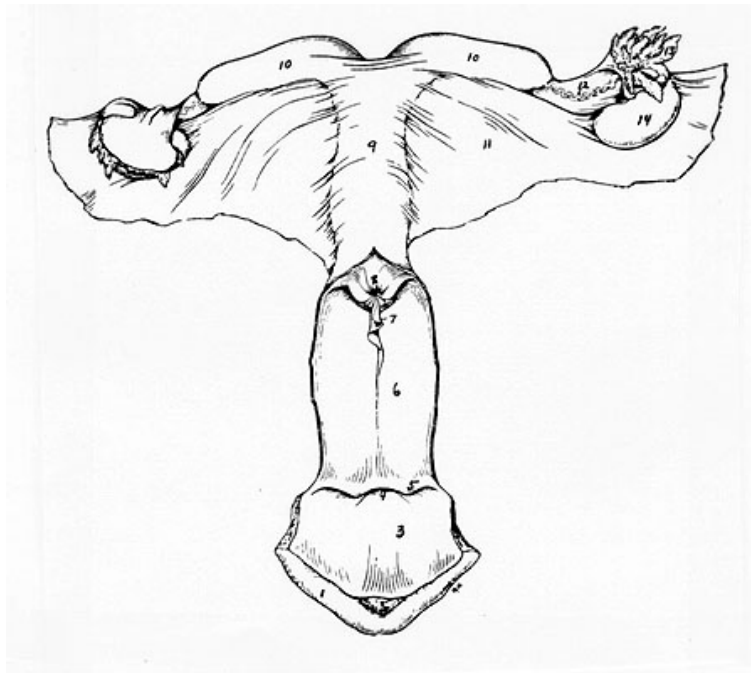
- | | |
|-----------------|--|
| Scrotum | --Sheath that covers the penis |
| Testis | -- Sac, a thermoregulator |
| Epididymis | --Testosterone produced here |
| Ductus Deferens | --Stores sperm |
| Penis | --Helps move mature sperm to the penis |
| Prepuce | -- Contains erectile tissue |



What is an accessory sex gland?

Name the three accessory sex glands and explain what they do?

Label the reproductive system:



Male or Female?

- 1.
- 2.
- 3.
- 4.
- 5.
- 6.
- 7.
- 8.
- 9.
- 10.
- 11.
- 12.
- 13.
- 14.

http://www.ansci.wisc.edu/jjp1/ansci_repro/lec/lec1/female_hist.html#anchor25890

Reproduction Game Answers

Matching

Female Reproductive Tract:

- Outside entrance into reproductive tract **6. Vulva**
- Open cavity that supports fetus and has secretions **3. Uterus**
- Found between cervix and vulva **5. Vagina**
- Organs that release eggs **1. Ovaries**
- Physical barrier between vagina and uterus **4. Cervix**
- Pathway leading to a uterine horn **2. Fallopian Tubes**

Describe:

Estrous Cycle: A mare, when not pregnant, goes through an estrous cycle every 21 – 23 days during the spring and summer. The estrous cycle is the development of an ovum until it is ready to be released from the ovary. The first part of the cycle is called anestrus, when a mare is not ready to be bred by a stallion. The second part called estrus, also called “heat,” is when the mare is receptive to breeding, or will allow a stallion to breed her. This part of the cycle only lasts for a few days and encompasses ovulation. A mare can signify that she is in heat by “winking,” frequently urinating, squealing, and allowing a stallion to mount her.

Ovum: The ovum, also known as an egg, carries the DNA of the mare.

Ovulation: Ovulation is when an ovum is released from the ovary during estrus.

Male Reproduction:

- Sheath that covers the penis – **Prepuce**
- Sac, a thermoregulator - **Scrotum**
- Testosterone produced here - **Testis**
- Stores sperm - **Epididymis**
- Helps move mature sperm to the penis – **Ductus Deferens**
- Contains erectile tissue - **Penis**

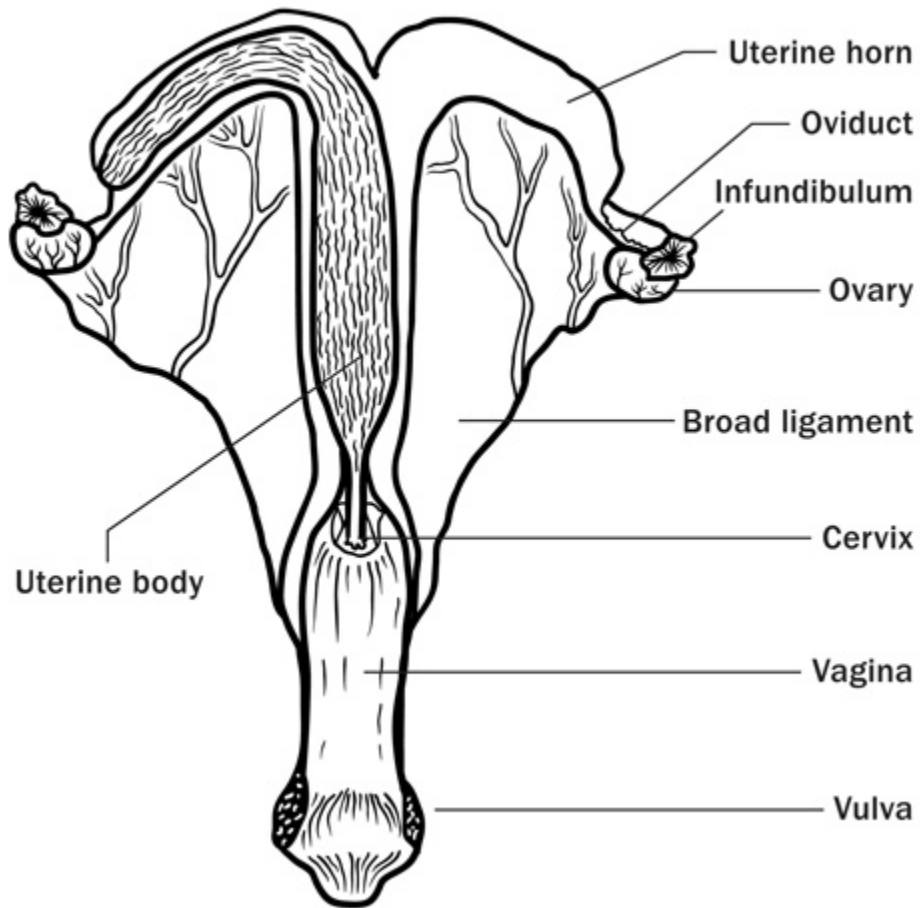
What is an accessory sex gland?

Accessory sex glands are located throughout the male urethra. They contribute different fluids to sperm to help aid in fertilization and promote sperm survival. During ejaculation they combine with sperm to create an ejaculate.

Name the three accessory sex glands and explain what they do?

1. **Vesicular Glands** - Provide nutrient rich fluid to ensure sperm cell survival.
2. **Bulbourethral Glands** - Produce pre-ejaculate to clean and lubricate urethra to create a clean, safe pathway for sperm
3. **Prostate Gland** - Produces fluid that neutralizes the acidic vaginal environment for the survival of sperm cells

Label the reproductive system:



<http://www.omafra.gov.on.ca/english/livestock/horses/facts/10-099.htm>

Male or Female? **Female**